



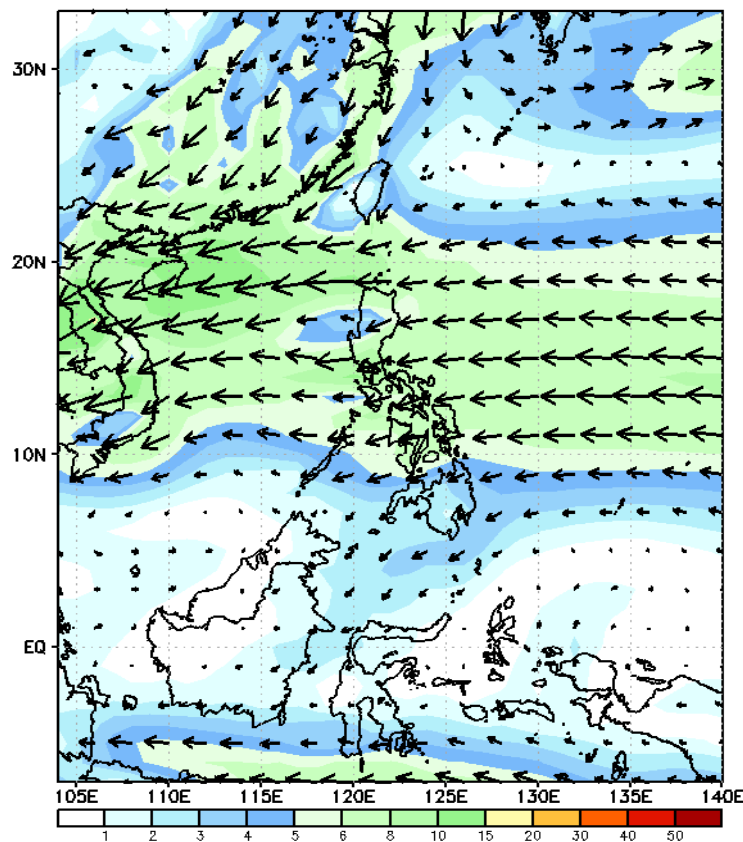
Week 1 & Week 2 Forecast for the Philippines using GEFS Model



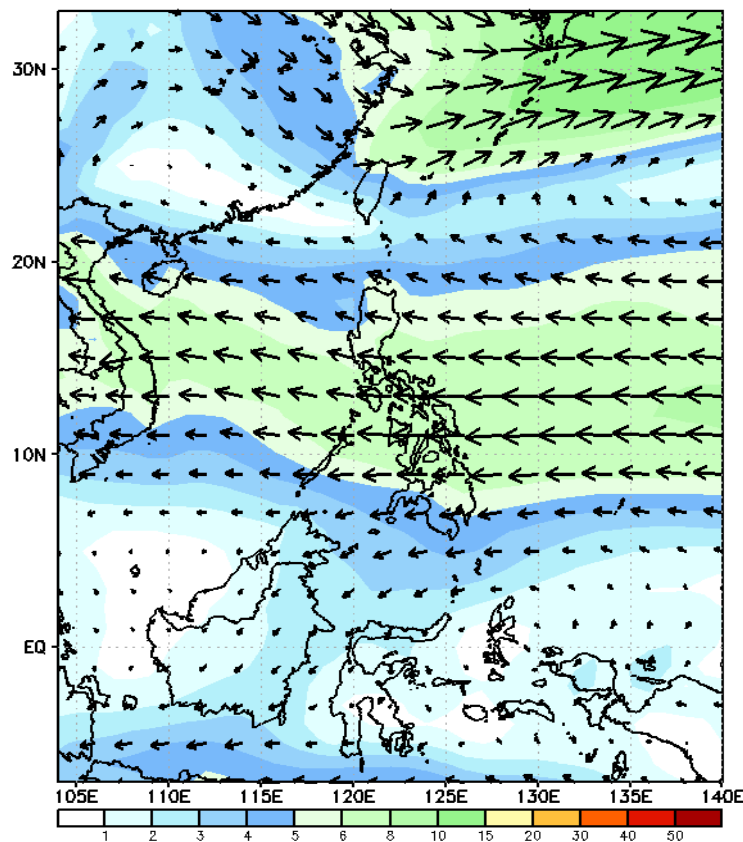
GEFS Week-1 Wind Forecasts:

Week 1: Oct 30- Nov 03, 2024

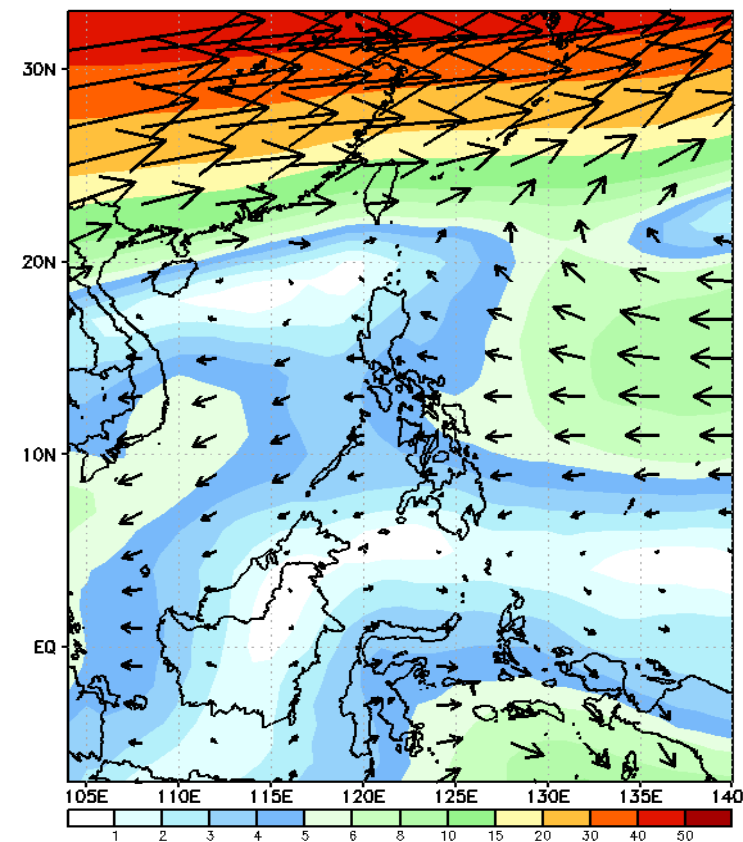
GEFS Week-1 850-hPa Wind Total
Valid: 20241101 - 20241107



GEFS Week-1 700-hPa Wind Total
Valid: 20241101 - 20241107

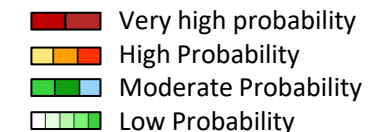


GEFS Week-1 200-hPa Wind Total
Valid: 20241101 - 20241107



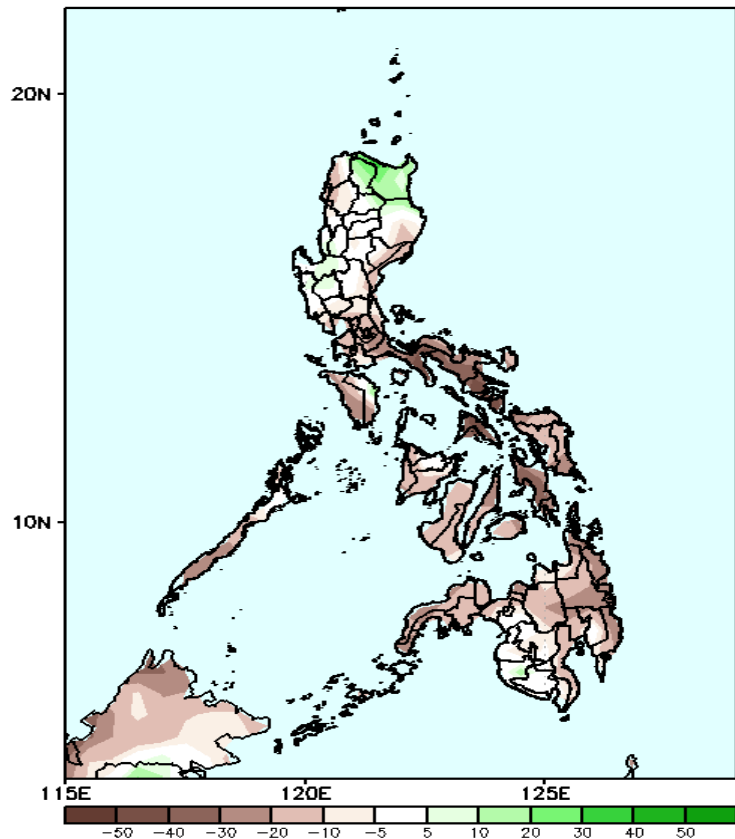
Northeasterly windflow affecting Extreme Northern Luzon; Easterlies affecting the rest of the country

Precipitation Anomaly and Exceedance Probability > 25/50 mm



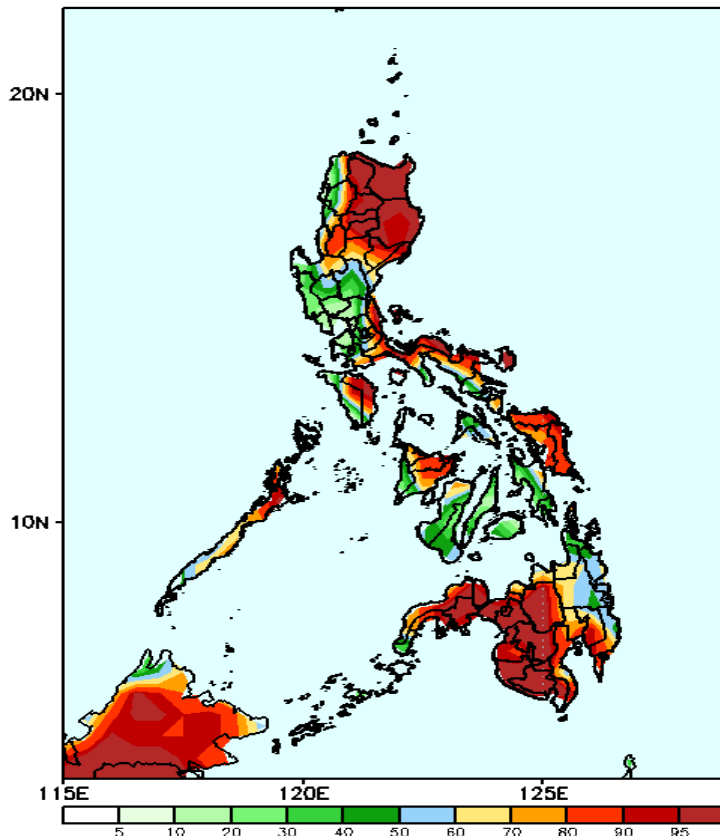
Week 1: Oct 28- Nov 03, 2024

GEFS Week-1 Precip Anomaly
Valid: 20241101 - 20241107



Rainfall deficit of up to 100mm is expected in most parts of Southern Luzon, Visayas and Mindanao while of increase of rainfall while be likely in Apayao, Cagayan and Extreme Northern Luzon.

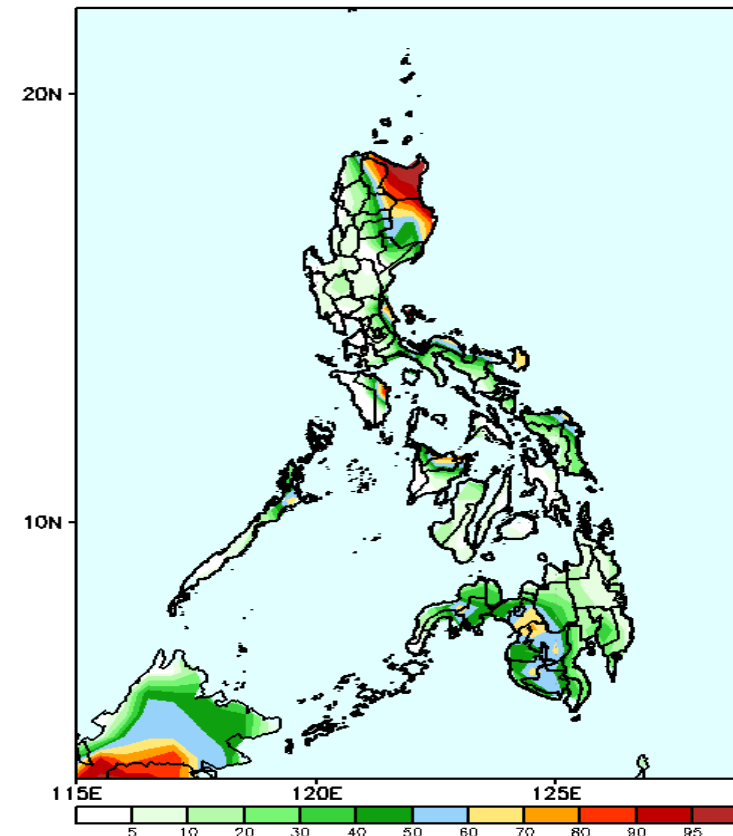
GEFS Week-1 Exceedance Prob. > 25mm
Valid: 20241101 - 20241107



Probability to Exceed 25mm

- High to very high over most parts of Northern and Central Luzon, Mindoro provinces, northern part of Palawan, Panay and most parts of Mindanao
- Moderate to high over the rest of the country.

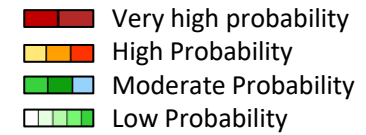
GEFS Week-1 Exceedance Prob. > 50mm
Valid: 20241101 - 20241107



Probability to Exceed 50mm

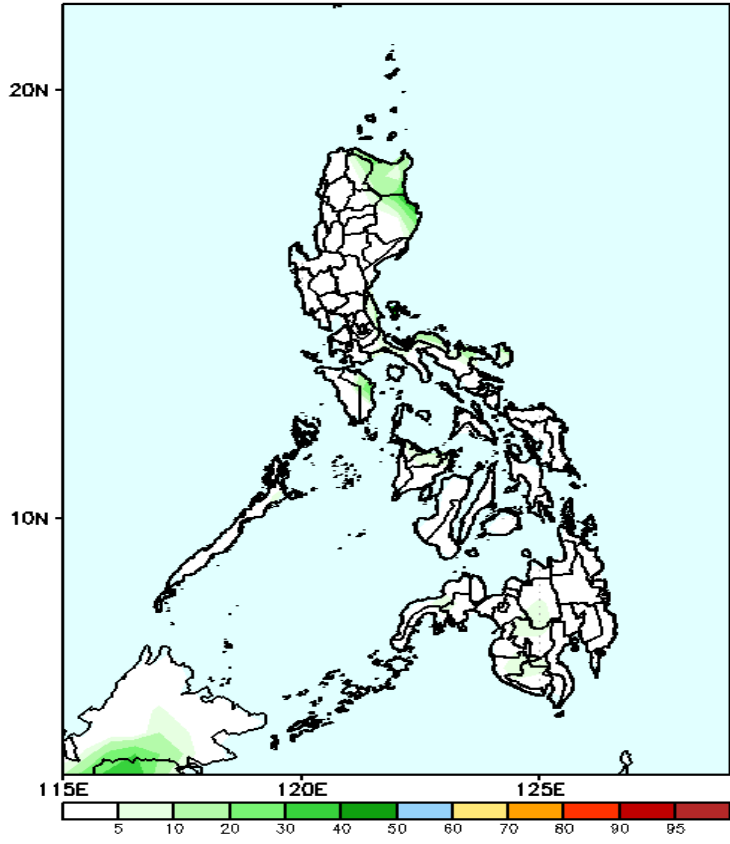
- High to very high over Extreme Northern Luzon and the northern part of Cagayan;
- Moderate to high over Apayao, eastern section Kalinga, Mountain Province and Ifugao, the rest of Cagayan, Isabela, eastern portions of Quezon and Bicol region, eastern part of Oriental Mindoro, Capiz, Aklan, Lanao del Sur, and most parts of SOCCSKSARGEN;
- Low to moderate over the rest of the country.

Exceedance Probability > 100/150/200 mm



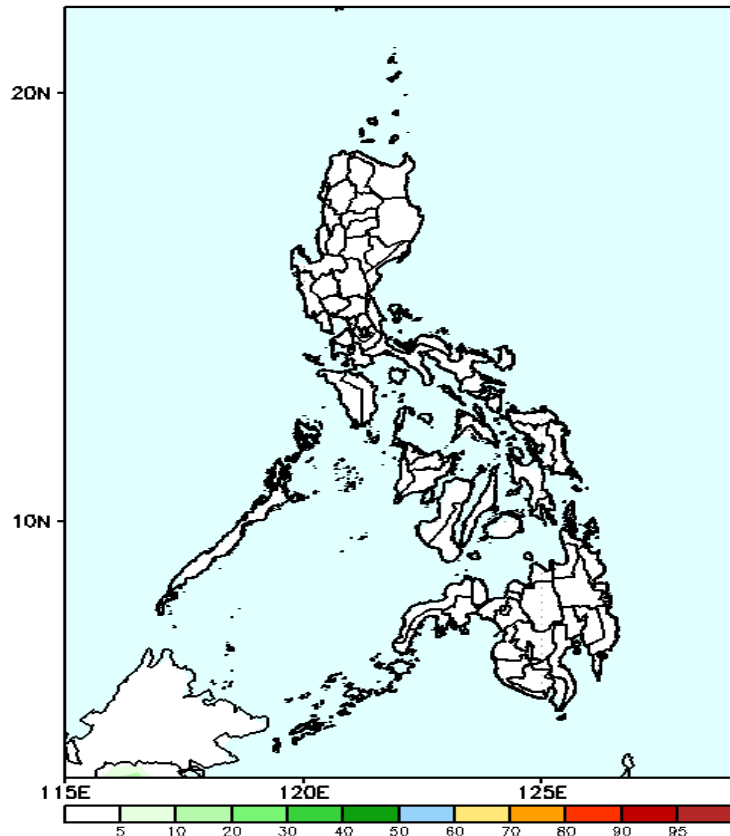
Week 1: Oct 28- Nov 03, 2024

GEFS Week-1 Exceedance Prob. > 100mm
Valid: 20241101 - 20241107



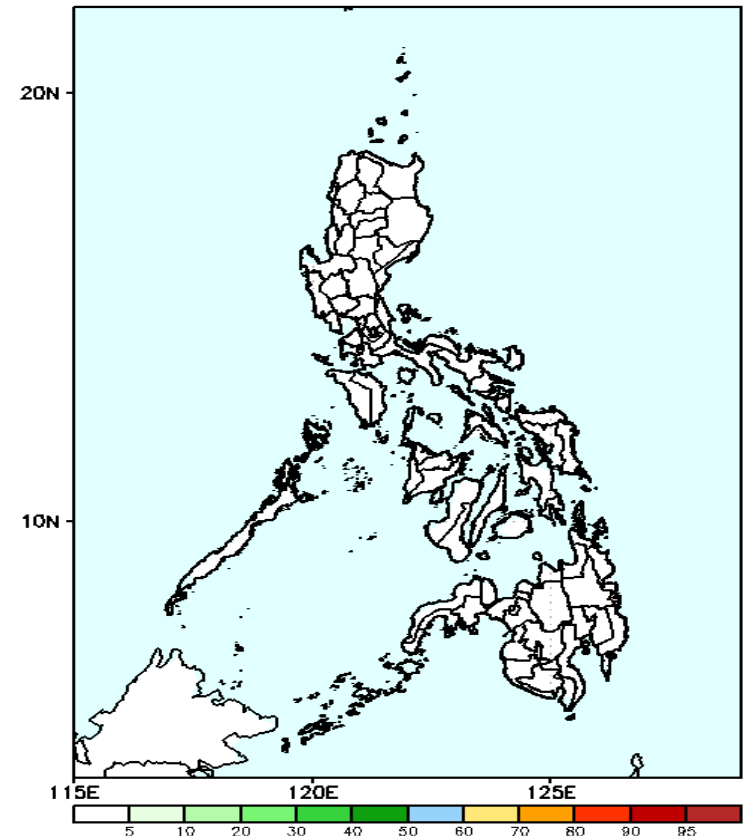
Probability to Exceed 100mm
• Low across the country.

GEFS Week-1 Exceedance Prob. > 150mm
Valid: 20241101 - 20241107



Probability to Exceed 150mm
• Low across the country.

GEFS Week-1 Exceedance Prob. > 200mm
Valid: 20241101 - 20241107

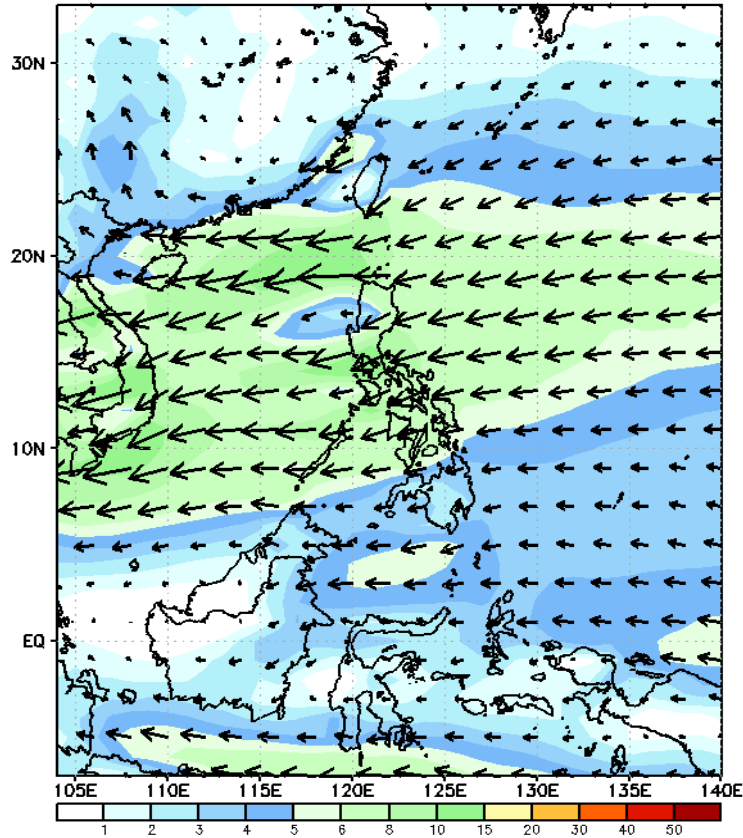


Probability to Exceed 200mm
• Low across the country.

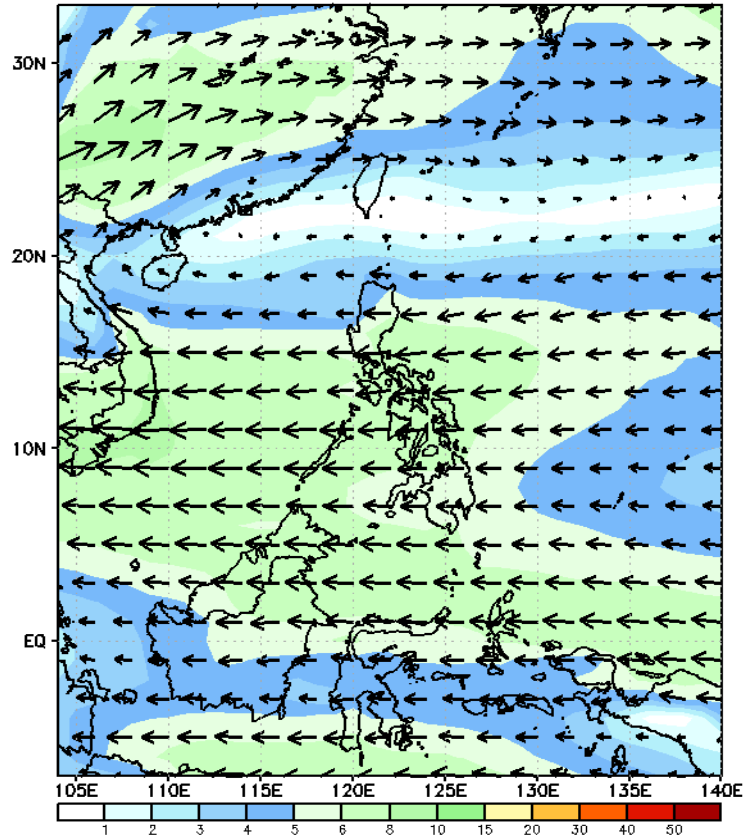
GEFS Week-2 Wind Forecasts:

Week 2: Nov 04-10, 2024

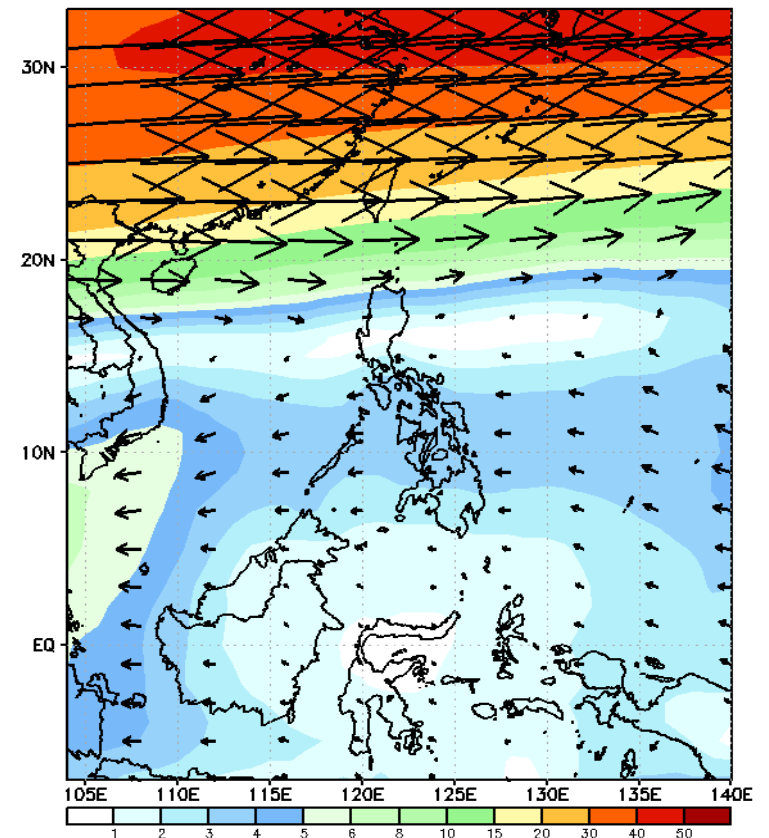
GEFS Week-2 850-hPa Wind Total
Valid: 20241108 - 20241114



GEFS Week-2 700-hPa Wind Total
Valid: 20241108 - 20241114

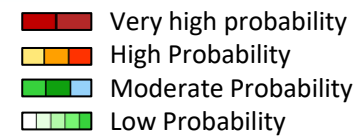


GEFS Week-2 200-hPa Wind Total
Valid: 20241108 - 20241114



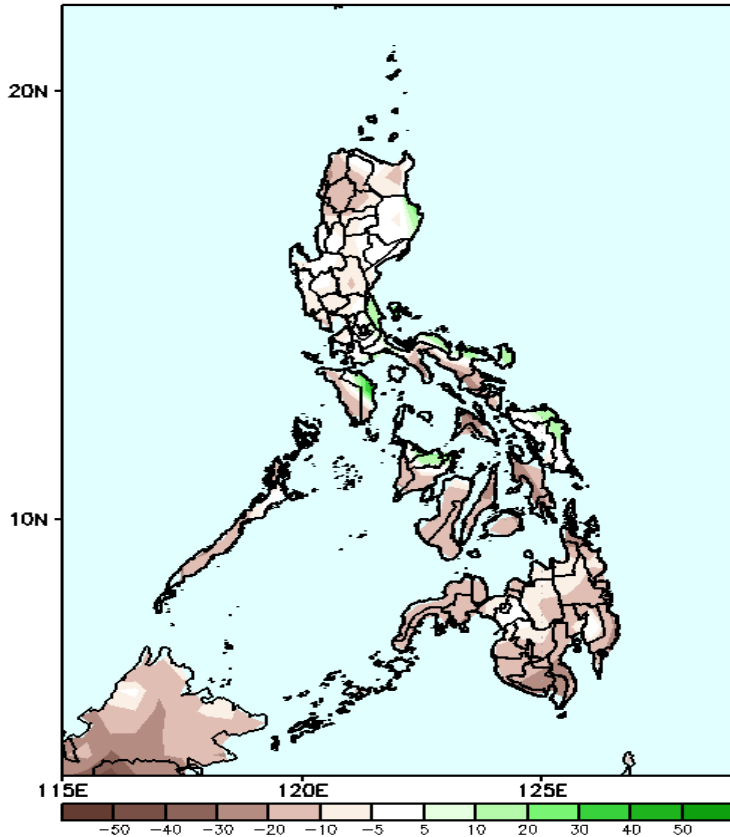
Northeasterly windflow is forecasted to affect Northern and Extreme Northern Luzon; Easterlies will likely affect the rest of the country.

Precipitation Anomaly and Exceedance Probability > 25/50 mm



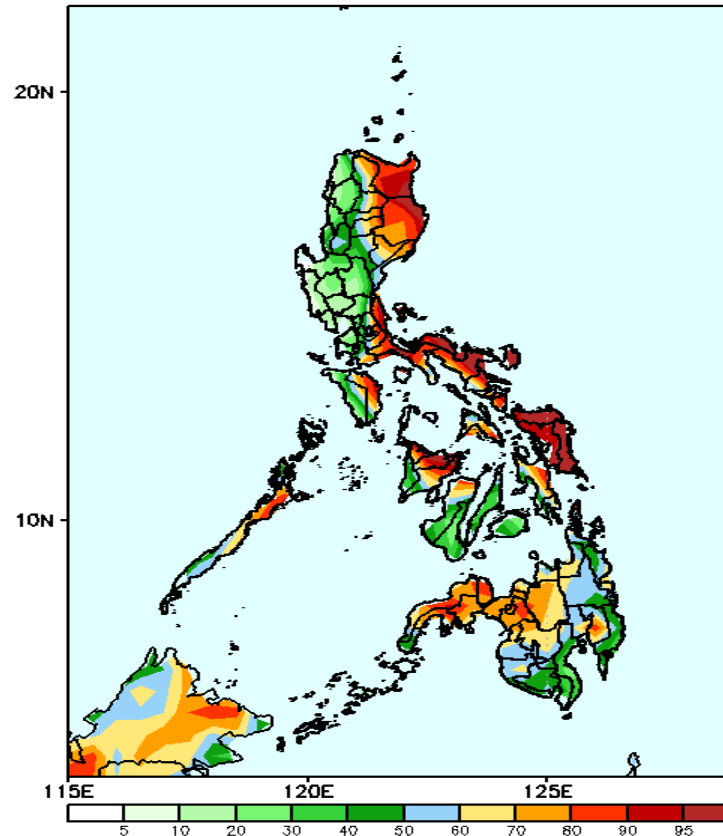
Week 2: Nov 04-10, 2024

GEFS Week-2 Precip Anomaly
Valid: 20241108 - 20241114



Rainfall deficit of up to 80mm is expected in most parts of the country except the eastern parts of Isabela, Quezon, Bicol Region, Oriental Mindoro, Capiz and Samar provinces where an increase of 20-40mm of rainfall will be likely.

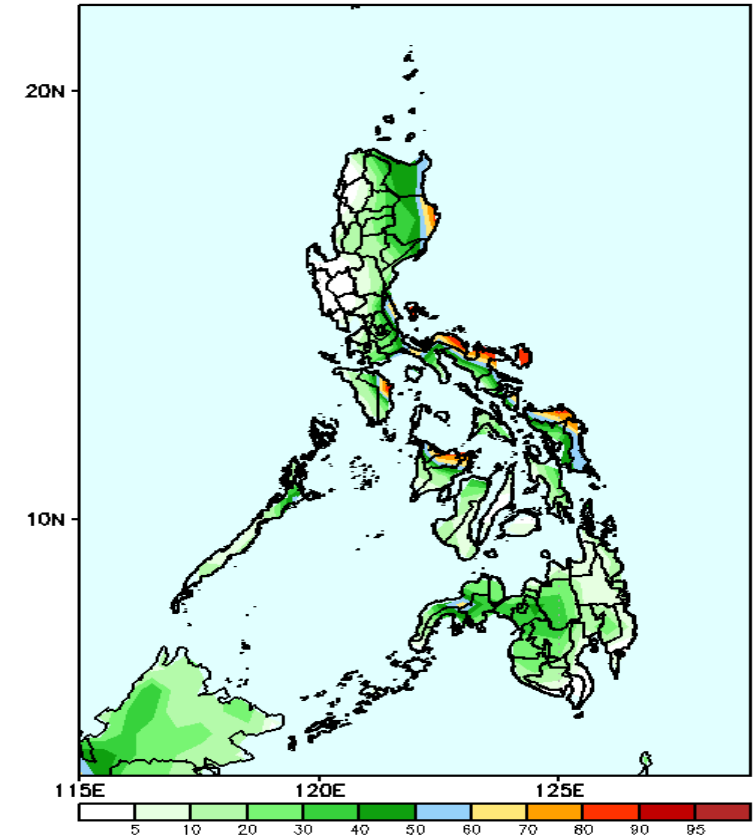
GEFS Week-2 Exceedance Prob. > 25mm
Valid: 20241108 - 20241114



Probability to Exceed 25mm

- High to very high over most parts of eastern Luzon, Bicol Region, Samar provinces and the eastern section of Panay;
- Moderate to high over the eastern section of CAR, Batangas, MIMAROPA, the rest of Panay, northern part of Negros Occidental, Iloilo provinces and

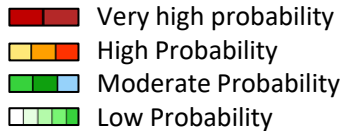
GEFS Week-2 Exceedance Prob. > 50mm
Valid: 20241108 - 20241114



Probability to Exceed 50mm

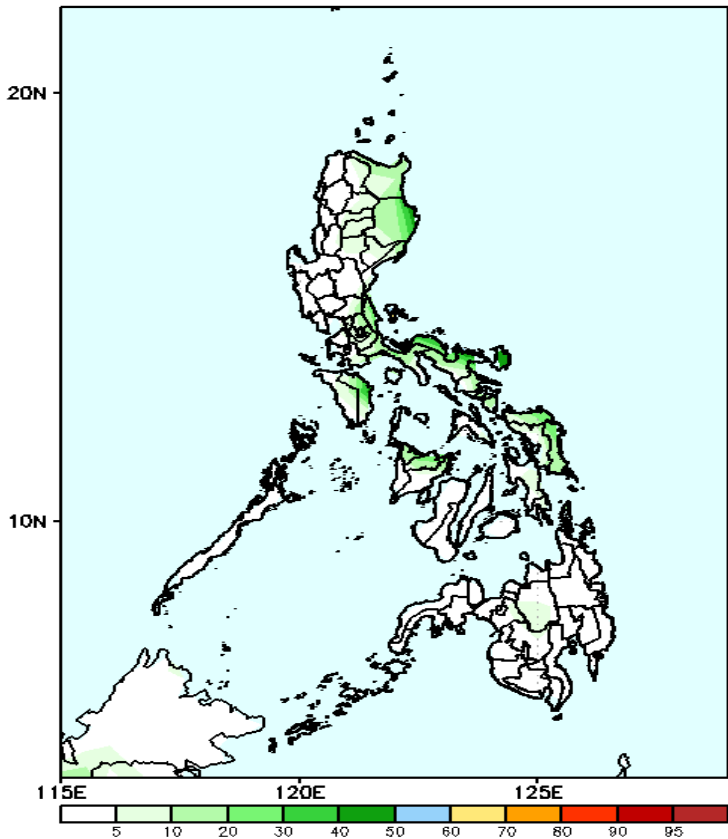
- Moderate to high over the eastern portions of Luzon, Oriental Mindoro and Visayas, Capiz, Aklan;
- Low to moderate over the rest of the country.

Exceedance Probability > 100/150/200 mm



Week 2: Nov 04-10, 2024

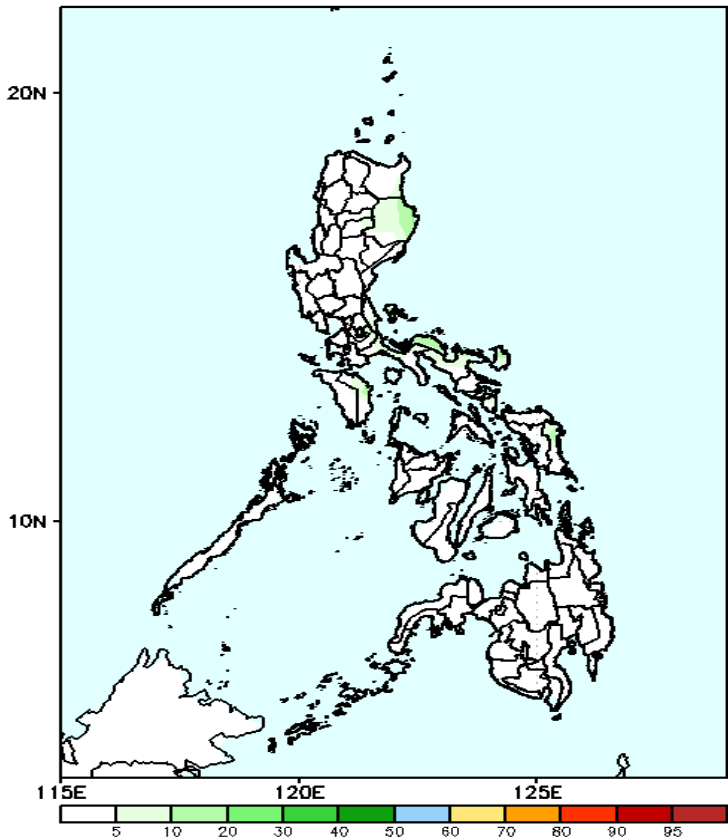
GEFS Week-2 Exceedance Prob. > 100mm
Valid: 20241108 - 20241114



Probability to Exceed 100mm

- Low to moderate over the eastern portions of Luzon and Visayas;
- Low over the rest of the country;

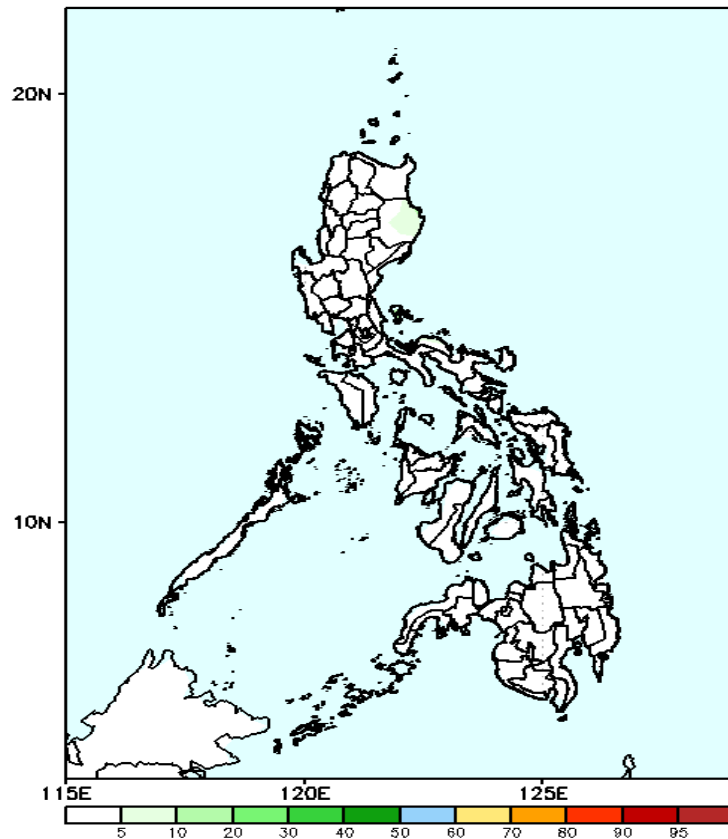
GEFS Week-2 Exceedance Prob. > 150mm
Valid: 20241108 - 20241114



Probability to Exceed 150mm

- Low across the country.

GEFS Week-2 Exceedance Prob. > 200mm
Valid: 20241108 - 20241114

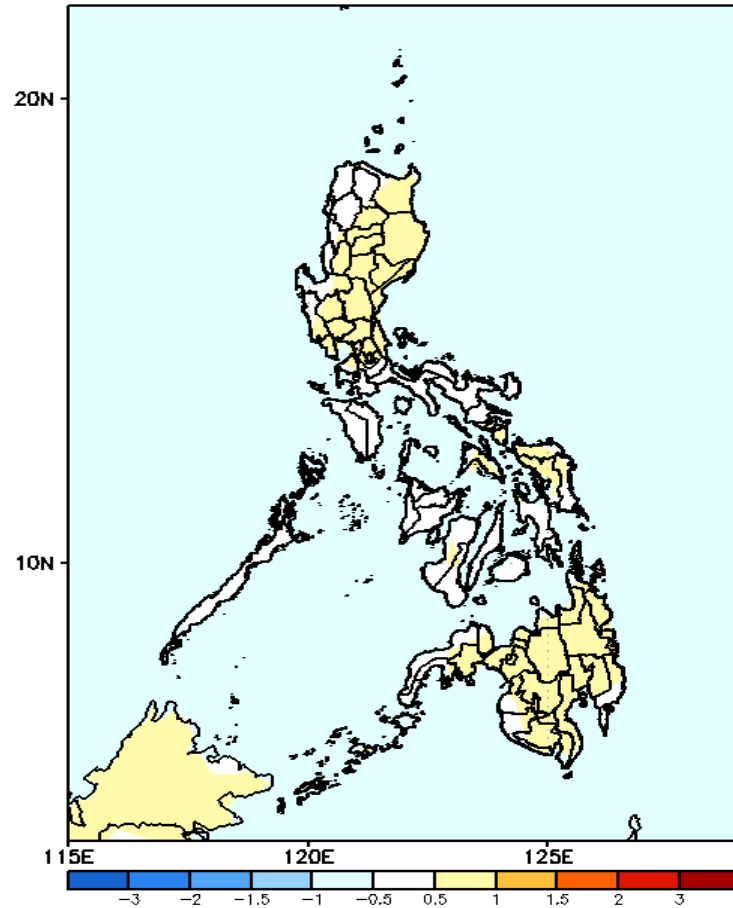


Probability to Exceed 200mm

- Low across the country.

GEFS Week-1 & 2 Forecasts: T2m Anomaly

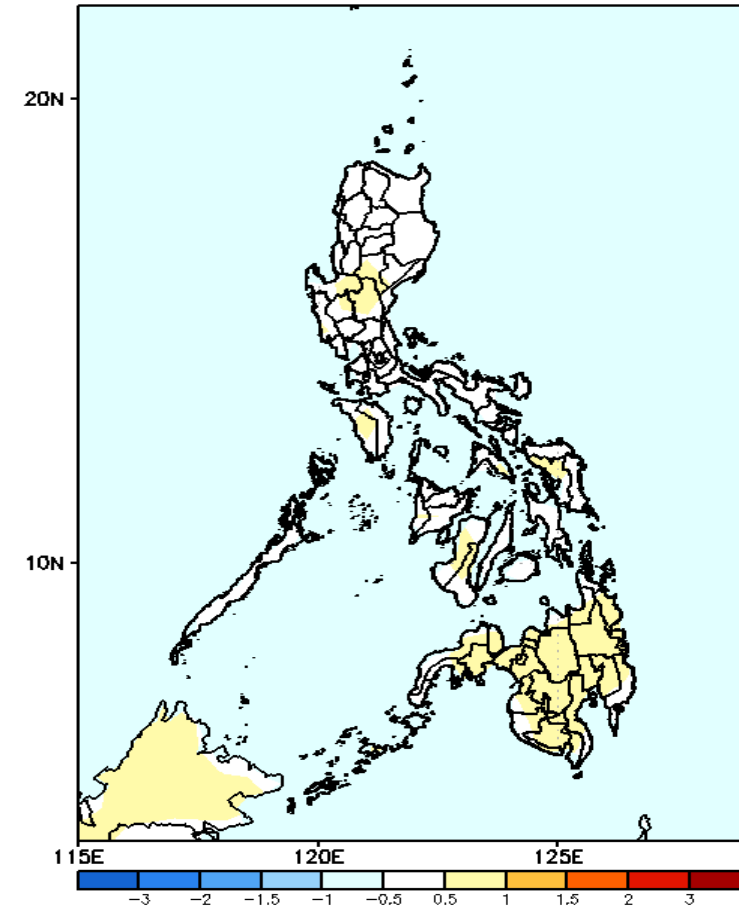
GEFS Week-1 T2m Anomaly
Valid: 20241101 - 20241107



2m Temperature Week 1: Oct 28- Nov 03, 2024

Near to slightly warmer than average surface air temperature will likely be experienced in most parts of the country.

GEFS Week-2 T2m Anomaly
Valid: 20241108 - 20241114



2m Temperature Week 2: Nov 04-10, 2024

Near to slightly warmer than average surface air temperature will likely be experienced in most parts of the country.